

# ENBRI - European Network of Building Research Institutes



*The European Network of Building Research Institutes (ENBRI) was founded in 1988 to bring together principal building and construction research institutes in Europe. Its 23 members employ in total over 3500 professional research staff. They undertake a wide range of research and innovation actions relevant to construction and the built environment, and manage unique research facilities.*

*The ENBRI Network provides a full coverage of topics for the construction and built environment and guarantees a steady up-dating of international knowledge and experience for the construction sector.*

ENBRI is a founding member of ECCREDI (The European Council for Construction Research, Development & Innovation)

## Contact:

Mr. Carlo De Pauw - Executive Secretary ENBRI  
European Network of Building Research Institutes  
c/o CSTC/WTCB  
rue du Lombard, 42  
B-1000 Brussels

Tel: + 32 2 655 77 11  
E-mail: [info@enbri.org](mailto:info@enbri.org)

Fax: +32 2 653 07 29  
<http://www.enbri.org>



# Construction

materials  
structures

# Process

construction  
methods  
value

# Environment

comfort  
heating  
acoustics

# Energy

techniques  
materials  
efficiency

# Security

risk management  
safety  
fire

# Standards

codes  
tests  
products

# People

quality of life  
security  
skills

# ICT

knowledge management  
intelligent buildings

# Challenges for Construction

Construction faces major challenges, including consequences of climate change, energy shortage, demographic change, mobility problems, need to upgrade a large proportion of Europe's building stock and urban areas, rising consumer expectations and demand for comfort, global competition and low profit margin within the sector etc. All this requires new technologies and processes which can bring about radical improvements.

The range and depth of understanding of technical, environmental and social issues in construction within ENBRI members, coupled with their leading position as national centres of excellence, enables them to play a distinctive role in addressing these issues, working with both all stakeholders of industry and public authorities.



# Vision for the construction sector

The Construction sector is a major economic sector, with a turnover of 1200 billion Euros. It accounts for well over 10% of European GDP and employs some 15 million people.

But the indirect impacts of the construction sector even go much wider. The quality and usability of the built environment influences the behaviour and performance of individuals, organisations and society in general. As such ENBRI endeavours the fostering of:

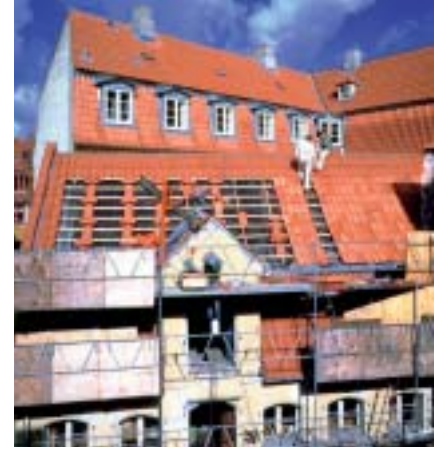
*“A sustainable and knowledge-based European construction sector, which is competitive, innovative, market driven and meets user and societal needs by providing the essential services to create the best living and working conditions for all people”.*

# Addressing the Challenges – Transforming Construction



**F**ulfilling user and stakeholder requirements and aspirations

*“...Enhanced global competitiveness will need to be based on better understanding of user, client and societal stakeholder requirements and more effective means of interpreting and fulfilling these, resulting in higher levels of customer satisfaction...”*



**U**pdating and improving the built environment

*“...Changing age distributions and lifestyles, greater disposable income, changing family and social structures, new technologies and greater awareness of health and safety issues all result in the need to modify and refurbish existing buildings and structures, ...”*



**E**xploiting new materials and technologies

*“...The need for more durable, higher performing and sustainable forms of construction will drive innovations in materials and technologies. Traditional materials will be used, in new forms and in combination with other materials that will enhance their performance...”*



**C**hanging construction processes and relationships

*“...Rationalisation of construction processes, with off-site assembly of large, fully-fitted components and mechanisation of site activities aided by new automation and guidance technologies will be a route to more efficient construction process...”*

**R**aising environmental standards

*“...Perhaps the most important challenge is to reduce Europe's contribution to climate change, and at the same time its dependence on imported energy, whilst continuing to improve the quality of life of all European citizens....”*



**P**romoting education and training, knowledge transfer, quality employment and innovation

*“... The development of a knowledge-based industry requires new developments to be communicated to a multitude of firms and individuals, but also requires those firms to have the ability to assimilate and apply the knowledge that they receive...”*



# Aims

- Promote the benefits of investment in construction research and development in construction and the built environment at national, regional and European levels.
- Promote co-operation among its members, and work with the European Commission and stakeholders of the European Construction Sector in order that ENBRI members may contribute effectively to the improvement of competitiveness, sustainability, quality and safety of the built environment.
- Advice policy makers and wider public on issues related to research and innovation in the built environment in a proactive and agenda-setting approach.



# Members

**BAM** Bundesanstalt für Materialforschung und –prüfung, Germany, [www.bam.de](http://www.bam.de)



**BRE** Building Research Establishment, United Kingdom, [www.bre.co.uk](http://www.bre.co.uk)



**CSTB** Centre Scientifique et Technique du Bâtiment, France, [www.cstb.fr](http://www.cstb.fr)



**CSTC/WTCB** Centre Scientifique et Technique de la Construction, Belgium, [www.cstc.be](http://www.cstc.be)  
Wetenschappelijk en Technisch Centrum voor het Bouwbedrijf, Belgium, [www.wtcbe.be](http://www.wtcbe.be)



**ÉMI** Non-profit Company for Quality Control and Innovation in Building, Hungary, [www.emi.hu](http://www.emi.hu)



**Empa** Swiss Federal Laboratories for Materials Testing and Research, Switzerland, [www.empa.ch](http://www.empa.ch)



**Enterprise Ireland**, Ireland, [www.enterprise-ireland.com](http://www.enterprise-ireland.com)



**ICI** Invention Centre Iceland-Building Research, [www.nmi.is](http://www.nmi.is)



**IETCC-CSIC** Instituto de Ciencias de la Construcción Eduardo Torroja, Spain, [www.ietcc.csic.es](http://www.ietcc.csic.es)



**IGH** Civil Engineering Institute of Croatia, Croatia, [www.igh.hr](http://www.igh.hr)



**IMS Institute** Institut za ispitivanje materijala – Institute for Testing Materials, Serbia, [www.institutims.co.yu](http://www.institutims.co.yu)



**INCERC** Institutul National de Cercetare in Constructii – National Institute for Building Research, Romania, [www.incerc.ro](http://www.incerc.ro)



**ITB** Instytut Techniki Budowlanej – The Building Research Institute, Poland, [www.itb.pl](http://www.itb.pl)



**ITC** Istituto per le Tecnologie della Costruzione – Construction Technologies Institute, Italy, [www.itc.cnr.it](http://www.itc.cnr.it)



**LNEC** Laboratório Nacional de Engenharia Civil, Portugal, [www.lnec.pt](http://www.lnec.pt)



**SBi** Danish Building Research Institute, Denmark, [www.sbi.dk](http://www.sbi.dk)



**SINTEF Byggeforsk**, Building and Infrastructure, Norway, [www.sintef.no](http://www.sintef.no)



**SP** Technical Research Institute of Sweden, Sweden, [www.sp.se](http://www.sp.se)



**TNO** Built Environment and Geosciences, The Netherlands, [www.tno.nl](http://www.tno.nl)



**TSUS** Technický a Skúsobný Ústav Stavebný – Building Testing and Research Institute, Slovakia, [www.tsus.sk](http://www.tsus.sk)



**TZUS** Technical and Test Institute for Construction Prague, Czech Republic, [www.tzus.cz](http://www.tzus.cz)



**VTT** Research and Development, Building and built environment, Finland, [www.vtt.fi/rte](http://www.vtt.fi/rte)



**ZAG** Zavod za gradbeništvo Slovenije – Slovenian National Building and Civil Engineering Institute, Slovenia, [www.zag.si](http://www.zag.si)

